



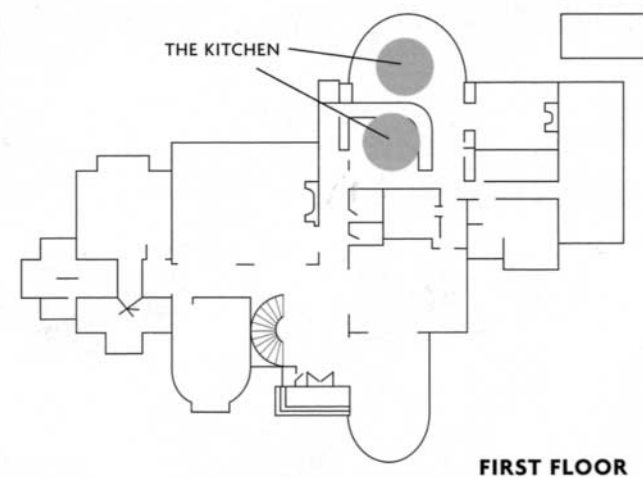
**THE KITCHEN**

**DESIGNED BY DIANE PAPARO**  
 DIANE PAPARO ASSOCIATES, NEW YORK CITY

With her extensive skills in space planning, Paparo was the logical choice for the design of the Showhouse kitchen. The large 25-by-50-foot interior was outfitted with existing brown mahogany cabinetry. To lighten the space and provide a contrast with the dark woods, she selected a creamy satin lacquer finish for the backsplash. One side of the room has a free-standing island and a 3-foot-high, L-shaped counter, which separates the seating area from the prep space.

On a wall opposite the entrance, Paparo created creamy white wood and lacquer curved convex panels. Draperies composed of taupe netting, bordered with 12-inch wool sateen hems, allow light to stream through a large window of glass overlooking the pool and back yard.

Over the terra-cotta floors, Paparo placed a robin's-egg blue wool and silk rug with a quince branch pattern. The breakfast table, chosen from her new collection, contains a base of glass panels and two-tone satin lacquer finish top. To complete the sumptuous space, Paparo included an oblong sofa with silver leaf frame and white silk-velvet upholstery. ➤



GIVING BACK

OCTOBER 5, 2006

**THE DESIGNER SHOWHOUSE OF NEW JERSEY GALA**

(201) was pleased to be the exclusive media sponsor for the Designer Showhouse of New Jersey. A preview cocktail party allowed friends to view the home before it was open to the public. Each of the rooms and gardens of this Saddle River Estate were designed by top interior designers from Bergen and the greater New York area. The Showhouse will raise money for the Cancer Center at Hackensack University Medical Center (HUMC).



2006 Showhouse designers Diane Durocher; David Zisa; Kim Costagliola; Carrie Schlein; Fred Cannon; Philip LaBossiere; Mario Buatta, honorary Showhouse chair; Diane Paparo; Karen Hing; Scott Sanders; Robert Ventolo; Zoya Bograd; and Ellen Hartgers



Justice Marie Garibaldi



Landscape and outdoor space designers Jozef Empel, Robin Nowicki, Bill Glaner, Laurie Cohen, Brad Meumann, Mary Moede and Tom Pannorfi



Matt and Celine Samanoglu



Ellen Greenbaum; David Zisa, designer; Susan Greenbaum; Fred Cannon, designer; and Jimmy Greenbaum, all of Greenbaum Interiors, Paterson